

1/27 Deloraine Road Lismore Heights

Table of Contents

- | [Property Details](#)
- | [Photo Gallery](#)
- | [Map](#)
- | [Contact For Inspection](#)

Property Details

1/27 Deloraine Road, Lismore Heights



ROSEMIST HOUSE

3  1  3 

Before you is a first prize, award-winning home in Lismore Heights.

Enjoy breathtaking views from a stylish Federation home as unique as it is comfortable.

The open-plan living, dining and lounge area are perfect for entertaining, yet also offers peaceful space for moments of solitude that make working from home feel like a luxury.

Step into the cottage-style kitchen with its terracotta-coloured tiles, timber cabinetry, granite benchtops and porcelain sink, all complementing a scenic view through the bay window.

The bathroom is no exception to the heritage charm of this home, featuring a large luxurious spa bath, cylindrical tiled

- 3 Bedrooms
- 1 Bathroom
- 1 Toilet
- 3 Garages
- Air Conditioning
- Reverse Cycle Air Conditioning
- Remote Garage
- Secure Parking
- Floor boards
- Outdoor Entertaining
- Fully Fenced
- Built In Robes
- Dishwasher

shower and a classic vanity with timber cabinetry. The space is further elevated by the arched window, decorative wall tiles and gold fixtures, making this bathroom not only functional but a true statement of timeless style. The cleverly designed layout includes a neatly tucked-away laundry, making the most of the spacious bathroom. The bedrooms are warm and inviting, filled with natural light and built-in wardrobes.

Throughout the house, you will find timber arches, detailed glass windows and decorative ceilings that add to the home's character and craftsmanship. The wrap-around verandah allows you to enjoy every sunrise and seamlessly blends the indoor and outdoor living spaces.

The aluminium railings on the timber deck reduce maintenance while retaining the aesthetic appeal of the home. Retreat to the back patio with its textured concrete, high fences and private atmosphere, complemented by an off-the-wall clothesline and single car garage with an additional separate toilet. A large two-car garage is set at the front of the property, providing ample space for both vehicles and additional storage or workspace needs.

In addition to its charm, key features include

- 12 solar panels, providing great energy efficiency
- Air conditioning in the lounge for year-round comfort
- Electric cooking plus dishwasher in the kitchen for easy meal preps

- Timber wrap around verandah capturing beautiful valley views
- Established gardens and landscaped surrounds

- A total of 3 car garage, plenty of storage

Photos may be worth a thousand words, but to truly

appreciate this property and the feelings it evokes, you need
to see it for yourself. Get in touch today to experience
Rosemist House first hand.

\$775,000

Photo Gallery





first national
Wal Murray & Co



first national
Wal Murray & Co



first national
Wal Murray & Co



first national
Wal Murray & Co



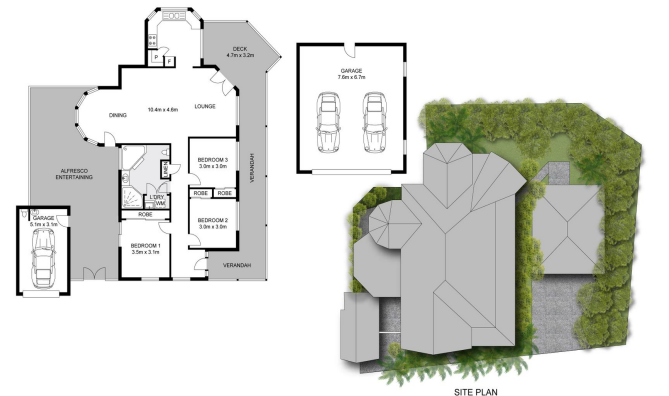
first national
Wal Murray & Co



first national
Wal Murray & Co



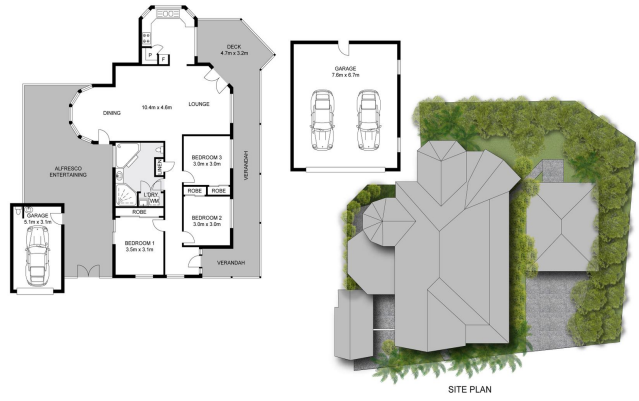
first national
Wal Murray & Co



Dimensions are approximate. All information contained herein gathered from sources we believe to be reliable. However we cannot guarantee its accuracy and intended purpose should rely on their own enquiries @ approximately 2024.

1/27 Deloraine Road, Lismore Heights

INT: 106.7m²
EXT: 80.9m²
GARAGE: 62.7m²
first national
Wal Murray & Co



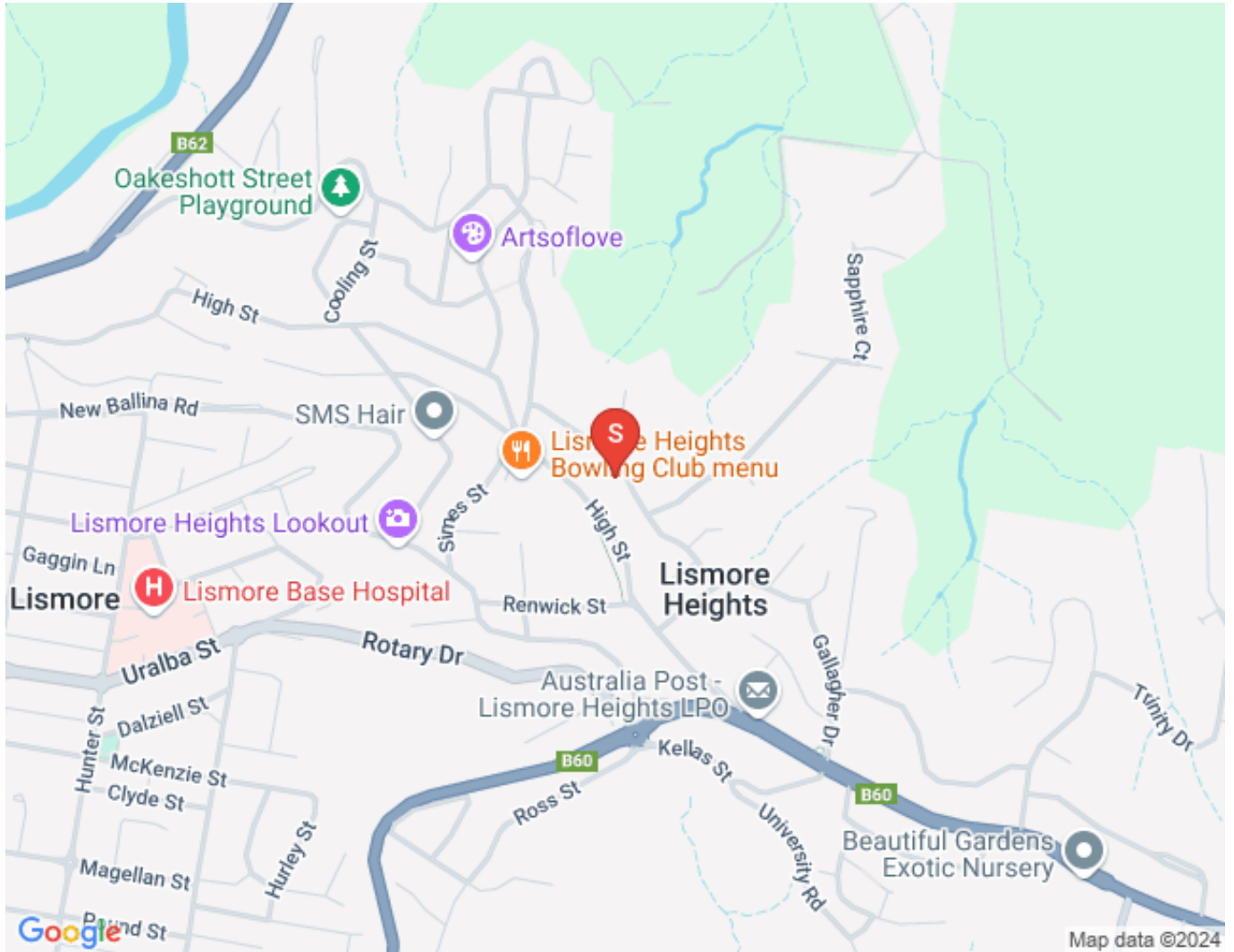
Dimensions are approximate. All information contained herein generated from sources we believe to be reliable. However we cannot guarantee its accuracy and interested persons should rely on their own enquiries © visionmedia vision 2024.

1/27 Deloraine Road, Lismore Heights

INT: 109.7m²
 EXT: 80.0m²
 GARAGE: 66.7m²

First National
 Wal Murray & Co

Map



Contact For Inspection



HARRY WILSON

RESIDENTIAL SALES LISMORE / LICENSED REAL ESTATE
AGENT

0491050166

harry@walmurray.com.au